

Electrical Installation and Maintenance NC II

Course Description

The Electrical Installation and Maintenance NC II Qualification consists of competencies that a person must achieve to enable him/her to install and maintain electrical wiring, lighting and related equipment and systems where the voltage does not exceed 600 volts in residential houses/buildings.

Nominal Duration

• Basic Competencies	68 hrs.
• Common Competencies	24 hrs.
• Core Competencies	194 hrs.
• Institutional Assessment	15 hrs.
• Supervised Work Based Training	80 hrs.

TOTAL 382 hrs.

A person who has achieved this qualification is competent to be:

***Building-Wiring Electrician
Residential/Commercial-Wiring Electrician
Maintenance Electrician***

TRAINEE ENTRY REQUIREMENTS:

- Can communicate both orally and in writing;
- Can perform basic mathematical computations;
- Must have completed at least 10 years of basic education or ALS certificate of achievement with grade 10 equivalent holder;
- Physically and mentally fit; and
- Must undergo Career Profiling and Trainability Evaluation

TWC Training is guided by the ten (10) basic principles of Competency-Based Training (CBT) delivery.

1. The training is based on curriculum developed from the competency standards;
2. Learning is modular in its structure;
3. Training delivery is individualized and self-paced;
4. Training is based on work that must be performed;
5. Training materials are directly related to the competency standards and the curriculum modules;
6. Assessment is based in the collection of evidence of the performance of work to the industry required standard;
7. Training is based on both on and off-the-job components;

8. Allows for recognition of prior learning (RPL) or current competencies;
9. Training allows for multiple entry and exit; and
10. Approved training programs are Nationally Accredited

Course Structure

BASIC COMPETENCIES

Unit of Competency	Module Title	Learning Outcomes	Nominal Duration
• Participate in workplace communications	• Participating in workplace communications	<ul style="list-style-type: none"> • Obtain and convey workplace information • Participate in workplace meetings and discussions applying gender-fair language • Complete relevant work-related documents • Follow routine spoken messages • Perform workplace duties following written notices 	20 hrs
• Work in a team environment	<ul style="list-style-type: none"> • Observing gender sensitivity in the workplace • Working in a team environment 	<ul style="list-style-type: none"> • Discuss the differences between sex and gender • Discuss gender identity and sexual orientation • Analyze the different manifestations of gender inequality in TVET, in society and in enterprises • Discuss gender and rights based approach to sexual and reproductive health including HIV-AIDS awareness and prevention • Describe team role and scope • Identify own role and responsibility within team • Work as team member • Develop effective workplace relationship including personal values and beliefs related to gender • Contribute to work group activities 	12 hrs
• Practice career professionalism	<ul style="list-style-type: none"> • Demonstrating work values and gender sensitivity • Practicing career professionalism 	<ul style="list-style-type: none"> • Describe the purpose of work/enterprise • Identify and deal with ethical problems • Apply work/entrepreneurship values and gender/ethics sensitivity • Maintain integrity of conduct in the workplace • Integrate gender perspectives with personal and organizational goals • Set and meet work priorities • Maintain professional growth and development 	4 hrs

Course Structure

BASIC COMPETENCIES

Unit of Competency	Module Title	Learning Outcomes	Nominal Duration
• Practice occupational health and safety procedures	• Practicing occupational health and safety procedures	<ul style="list-style-type: none"> • Identify hazards and risks including those from climate change • Evaluate hazards and risks including those from climate change • Control hazards and risks including those from climate change • Maintain occupational health and safety awareness including women's issues/ concerns relative to OSH 	24 hrs

COMMON COMPETENCIES

Unit of Competency	Module Title	Learning Outcomes	Nominal Duration
• Use hand tools	• Using hand tools	<ul style="list-style-type: none"> • Plan and prepare for tasks to be undertaken • Prepare hand tools • Use appropriate hand tools and test equipment • Maintain hand tools 	5 hrs
• Perform mensuration and calculation	• Performing mensuration and calculation	<ul style="list-style-type: none"> • Select measuring instruments • Carry out measurements and calculation • Maintain measuring instruments 	4 hrs
• Prepare and interpret technical drawing	• Preparing and interpret technical drawing	<ul style="list-style-type: none"> • Identify different kinds of technical drawings • Interpret technical drawing • Prepare/make changes to electrical/electronic schematics and drawings • Store technical drawings and equipment/instruments 	5 hrs
• Apply quality standards	• Applying quality standards	<ul style="list-style-type: none"> • Assess quality of received materials or components • Assess own work • Engage in quality improvement 	5 hrs
• Terminate and connect electrical wiring and electronics circuit	• Terminating and connect electrical wiring and electronics circuit	<ul style="list-style-type: none"> • Plan and prepare for termination/connection of electrical wiring/electronics circuits • Terminate/connect electrical wiring/electronic circuits • Test termination/connections of electrical wiring/electronics circuits 	5 hrs

Course Structure

CORE COMPETENCIES

Unit of Competency	Module Title	Learning Outcomes	Nominal Duration
<ul style="list-style-type: none"> Perform roughing-in, wiring and cabling works for single-phase distribution, power, lighting and auxiliary systems 	<ul style="list-style-type: none"> Performing roughing-in, wiring and cabling works for single-phase distribution, power, lighting and auxiliary systems 	<ul style="list-style-type: none"> Install electrical metallic/non-metallic (PVC conduit) Install wire ways and cable tray Install auxiliary terminal cabinet and distribution panel Prepare for cable pulling and installation Perform wiring and cabling lay out Notify completion of work 	110 hrs
<ul style="list-style-type: none"> Install electrical protective devices for distribution, power, lighting, auxiliary lighting protective and grounding systems 	<ul style="list-style-type: none"> Installing electrical protective devices for distribution, power, lighting, auxiliary lighting protective and grounding systems 	<ul style="list-style-type: none"> Plan and prepare work Install electrical protective devices Install lighting fixture and auxiliary outlet Notify completion of work 	44 hrs
<ul style="list-style-type: none"> Install wiring devices of floor and wall mounted outlets, lighting fixture/switches and auxiliary outlets 	<ul style="list-style-type: none"> Installing wiring devices of floor and wall mounted outlets, lighting fixture/switches and auxiliary outlets 	<ul style="list-style-type: none"> Select wiring devices Install wiring devices Install lighting fixtures/switches Notify completion of work 	40 hrs



TESDA Women's Center

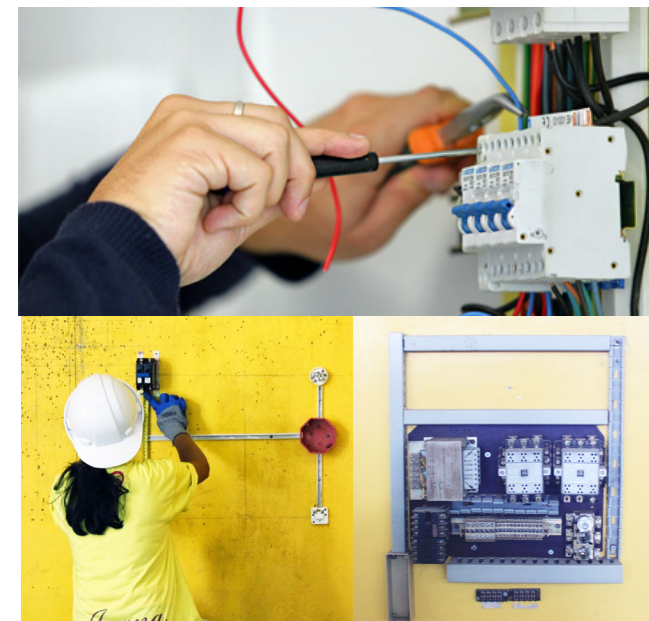
VISION

“TESDA Women's Center is the lead TVET Institution of excellence in empowering Filipino women.”

MISSION

“As the lead TVET Institution of excellence in women empowerment, TESDA Women's Center advocates and provides programs and services geared towards quality-assured, inclusive and gender-fair TVET.”

ELECTRICAL INSTALLATION AND MAINTENANCE NC II



For inquiries, please call us at

Telephone Numbers: 887-7777 or 817-2650

Email address: twc@tesda.gov.ph

Website: <http://www.tesda.gov.ph>

Facebook: <http://www.facebook.com/TESDAWomenCenter>

Gate 1, TESDA Complex, East Service Road, South Superhighway, Taguig City